

# PHILLIPS

PRESS RELEASE

## PHILLIPS ANNOUNCES HIGHLIGHTS FROM SPRING EDITIONS & WORKS ON PAPER AUCTIONS

Four Auctions Across Two Days Showcase  
Mastery Across Styles, Movements, and Media

Ed Ruscha's Landmark *Standard Station* Prints Lead the Evening Sale



**Ed Ruscha**

*Standard Station; Mocha Standard; Cheese Mold Standard with Olive; and Double Standard*, 1966 and 1969

Estimate: \$900,000–1,200,000

To be offered in the Editions & Works on Paper Evening Sale, 22 April

NEW YORK – 7 APRIL 2026 – Phillips is pleased to present highlights from its spring 2026 Editions & Works on Paper auctions in New York, spanning two days and four distinct sales. The series begins on 22 April with MODERNISM and the Editions & Works on Paper Evening Sale, followed on 23 April by the Editions & Works on Paper Day Sale and *DUCHAMP & COMPANY, Curated by Francis M. Naumann*, [as previously announced](#). All works will be on view at Phillips' New York galleries from 16–22 April, with the Editions & Works on Paper Online sale running from 21–29 April on [phillips.com](https://www.phillips.com).

Among the Post-War and contemporary highlights is the top lot of the Evening Sale, Ed Ruscha's rare and iconic group of four screenprints, offered as a single lot — *Standard Station* (1966), alongside *Mocha Standard*, *Cheese Mold Standard with Olive*, and *Double Standard* (all 1969). One of the most enduring images of Ruscha's career, the Standard gas station recurs throughout his practice as a vehicle for exploring Americana and the mythology of the open road. As a young man, Ruscha regularly drove between his hometown of Oklahoma City and his new home in Los Angeles along Route 66, photographing the fuel stops that would become ubiquitous to his visual

language. He would return to the motif more than four decades later with *Ghost Station* (2011), a monochromatic embossed image that features prominently in the Evening Sale.



**After Albrecht Dürer**  
*Rhinoceros*, circa mid- to late 16th/early 17th century  
Estimate: \$20,000–30,000

The theme of Americana continues with Andy Warhol's *Mobil* from *Ads* (1985), a unique, brightly colored trial proof from one of the artist's most coveted series. Warhol's *Martha Graham* (1986), a complete set of three screenprints depicting his friend — the pioneering choreographer and dancer — stands as a masterclass in lyrical and gestural printmaking. Joining this great group of Warhols is the artist's iconic *Grace Kelly* (1984) alongside other select works from the Estate of Benjamin and Deborah Mangel. An unexpected highlight of the Evening Sale is an exquisitely detailed ink and wash drawing after Albrecht Dürer's immensely influential woodcut of a rhinoceros. Created by an unknown artist in circa mid- to late 16th/early 17th century, this virtuosic work is derived from one of the most recognizable animal images in art history.

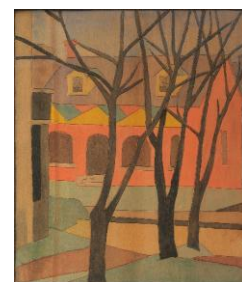
Also featured is a dynamic selection of After Basquiat prints, led by the complete set of four screenprints — *Wolf Sausage*, *King Brand*, *Dog Leg Study*, and *Undiscovered Genius* (1982–83/2019) — which pulse with frenetic energy. Additional works include *50 Cent Piece* (1982–83/2019), *Piano Lesson* from the *Superhero* portfolio (1982–87/2022), and *Untitled V* from the *Figure* portfolio (1992/2013). Rounding out the Post-War and contemporary offerings is an expansive roster of influential 20th- and 21st-century artists, including Louise Bourgeois, Banksy, Kiki Smith, Jasper Johns, Vija Celmins, Roy Lichtenstein, Pat Steir, and Keith Haring.



**Andy Warhol**  
*Martha Graham*, 1986  
Estimate: \$70,000–100,000

## MODERNISM: Editions and Works on Paper

Following strong enthusiasm in the category, the dedicated MODERNISM sale returns for a third season. The offering comprises more than 100 lots by American and European masters and is anchored by over 40 works of American Modernism from the Tanenbaum Family Collection. The collection was formed by key artists of the movement including Charles Sheeler, Ralston Crawford, and Charles Burchfield, acquired from iconic American Art galleries Hirschl & Adler, Inc., Richard York Gallery, and Kennedy Galleries, Inc. Especially noteworthy are three exceptional etchings by Edward Hopper — *Night in the Park* (1922), *The Railroad* (1922), and the iconic *Night Shadows* (1921) — each exemplifying the artist's meticulous technique and psychologically charged depictions of American life. These works are complemented by an etching by Rembrandt, a formative influence on Hopper's handling of light and shadow. A rare and revelatory work in the sale is the original wood block used by Blanche Lazzell to produce her 1950 woodcut *Three Trees*.



**Blanche Lazzell**  
*Three Trees*, 1950  
Estimate: \$10,000–15,000

Bearing a rich patina, the block offers a tangible insight into the Provincetown printmaker's process. Additional drawings and prints by John Marin, Stuart Davis, George Bellows, Louis Lozowick, and John Sloan will also be offered, many without reserve.

Picasso's rare pre-steel-facing impression of *Bust of a Man* from the *Saltimbanques* series (1905) — among the artist's earliest prints — is distinguished by an extraordinary economy of line that reveals a remarkably sophisticated eye at a young age. From later in his career, the aquatint *Smoker with a White Cigarette* (1964) offers a more colorful and gestural interpretation of the bust. Also highlighted are El Lissitzky's *Sportsmen* and *New Man* from *The Three-Dimensional Design of the Electro-Mechanical Show 'Victory over the Sun'* (1920–21), the rare and quintessentially Cubist-Futurist lithographs based on drawings inspired by the groundbreaking 1913 opera *Victory Over the Sun*. Two special Henry Moore portfolios, formerly in the collection of his close friend Lauren Bacall, further enrich the offering, alongside works by European masters including Braque, Miró, Chagall, Giacometti, and Klee.

## HIGHLIGHTS



**Pablo Picasso**  
*Bust of a Man*,  
plate 4 from *La Suite des*  
*Saltimbanques*, 1905  
Estimate: \$60,000–80,000



**Edward Hopper**  
*Night in the Park*, 1921  
Estimate: \$25,000–35,000



**El Lissitzky**  
*New Man*, plate 10 from *The Three-*  
*Dimensional Design of the*  
*Electro-Mechanical Show 'Victory*  
*over the Sun'*, 1920-21  
Estimate: \$15,000–25,000



**Pablo Picasso**  
*Smoker with a White*  
*Cigarette*, 1964  
Estimate: \$25,000–35,000

To be offered in MODERNISM  
: Editions & Works on Paper, 22 April



**Andy Warhol**  
*Grace Kelly*, 1984  
Estimate: \$100,000–150,000



**Andy Warhol**  
*Mobil*, from *Ads*, 1985  
Estimate: \$120,000–180,000



**Roy Lichtenstein**  
*Sunshine Through the Clouds*, from  
*Landscape Series*, 1985  
Estimate: \$60,000–80,000

To be offered in Editions & Works on Paper Evening Sale, 22 April

# PHILLIPS

EST. 1796

As Phillips marks its 230th anniversary in 2026, the house celebrates more than two centuries at the forefront of the global market for Modern & Contemporary Art, Design, and Luxury. Founded in 1796 by the charismatic auctioneer Harry Phillips, the company has, since its earliest days, offered a distinct and forward-looking approach to sales and collecting. Over the centuries, Phillips has delivered record-breaking results and landmark offerings, while also pioneering new modes of collecting via the likes of Dropshop. Through its partnership with Bacs & Russo, Phillips continues to lead the industry in watches, setting new benchmarks for excellence, innovation, and connoisseurship. Today, Phillips remains true to the entrepreneurial spirit of its founder while redefining the role of a 21st century auction house.

**Public viewing:** 16-22 April

## **Auctions**

### **Editions & Works on Paper Online**

21-29 April

<https://www.phillips.com/auction/NY030526>

### **MODERNISM: Editions & Works on Paper**

22 April, 12:00 PM ET

<https://www.phillips.com/auction/NY030426>

### **Editions & Works on Paper Evening Sale**

22 April 5:00 PM ET

<https://www.phillips.com/auction/NY030326>

### **Editions & Works on Paper Day Sale**

23 April 10:00 AM ET

<https://www.phillips.com/auction/NY030326>

### **DUCHAMP & COMPANY, Curated by Francis M. Naumann**

23 April, 3:00 PM ET

<https://www.phillips.com/auction/NY030826>

**Location:** 432 Park Avenue, New York NY 10022

## ABOUT PHILLIPS

Phillips: where the world's curious and bold connect with the art, design, and luxury that inspires them. As a leading global platform for buying and selling 20th and 21st century works, Phillips offers dedicated expertise in the areas of Modern and Contemporary Art, Design, Photographs, Editions, Watches, and Jewels. Auctions and exhibitions are primarily held in New York, London, Geneva, and Hong Kong, with representative offices based throughout Europe, the United States, and Asia. Phillips offers a regular selection of live and online auctions, along with items available for immediate purchase. Phillips also offers a range of services and advice on all aspects of collecting, including private sales and assistance with appraisals, valuations, and financial planning.

Visit [phillips.com](https://www.phillips.com) for further information.

*\*Estimates do not include buyer's premium; prices achieved include the hammer price plus buyer's premium.*

## PRESS CONTACTS:

NEW YORK – Jaime Israni, Head of PR and Corporate Communications, Americas  
Katie Zoni, PR Manager

[jisrani@phillips.com](mailto:jisrani@phillips.com)

[kzoni@phillips.com](mailto:kzoni@phillips.com)

PHILLIPS NEW YORK – 432 Park Avenue, New York, NY 10022

PHILLIPS LONDON – 30 Berkeley Square, London, W1J 6EX

PHILLIPS HONG KONG – G/F, WKCDA Tower, West Kowloon Cultural District, No. 8 Austin Road, West Kowloon

FOLLOW US ON:



WeChat